

## eSWPPP ELECTRONIC STORMWATER POLLUTION PREVENTION PLAN

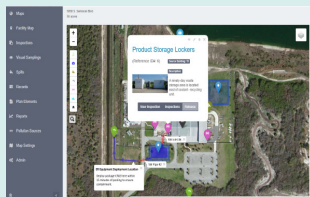
### About eSWPPP

The stormwater pollution prevention program is based on the NPDES Stormwater Multi-Sector General Permit and requires complex plans to prevent stormwater pollution associated with on-site activities. Historically, the compliance program management strategy included maintenance of detailed figures, inspections/sampling forms, and training/assessment data. The management of these data opens the permittee to compliance vulnerabilities and potential fines.

MSE Group provides a comprehensive electronic web-based system that greatly improves the accuracy of the information and streamlines the regulatory compliance process, which lowers potential risk of vulnerabilities, improves process efficiency, and results in time and cost savings.

### System Benefits

- Reduced compliance vulnerabilities
- Quick and efficient data review and recall
- Data portability with tablet integration
- Discharge pathway tracking
- Fillable forms
- SWPPP hard copy generation
- Regulatory compliance cross reference
- Manage multiple sites with one platform



### eSWPPP Technical Details

- Web-based data system that can be hosted in the “cloud” or on-premises/intranet-based
- Utilizes modern programming techniques and best practices for HTML5, CSS, PHP, and JavaScript
- Powered by a SQL-based, back-end database that can be stand-alone or integrated into existing systems
- Modern programming techniques offering flexibility to allow the system to adapt to any IT environment and meet end-user operator requirements such as encryption and customizable user permissions

### System Features

#### Integrated Mapping

With the eSWPPP system, a complete global view of your plan is always at your fingertips. Whether monitoring from an office or out in the field, you'll have a real-time view of your eSWPPP system's status.

- Map layers
- Map draw
- Map search
- Map plugins
- Custom map creation
- Drag-and-drop pins with advanced functionality
- Geo-locating

#### Inspections & Sampling Forms

eSWPPP not only standardizes your inspection and sampling efforts—it also improves them by adding multimedia elements and multi-user capability.

- Automated visual and analytical sampling forms
- Corrective action tracking
- Multimedia integrated inspections using tablet photos
- Customizable workflows
- Electronic signatures
- Storage of historical inspection and sampling forms

#### Cross-Platform Integration

Whether your company works on Apple iOS, Android, Mac, Windows, or a combination of all four platforms, your team can access data on any device.

- Web-based system
- Mobile and desktop compatible
- Offline access capability

FOR MORE INFORMATION ABOUT MSE GROUP,  
PLEASE CONTACT

Chris Parent, Vice President  
407.402.4307 • [cparent@msegroup.com](mailto:cparent@msegroup.com)

[www.msegroup.com](http://www.msegroup.com)

EXCEEDING EXPECTATIONS EVERY TIME